

Representative Student Work for Task A

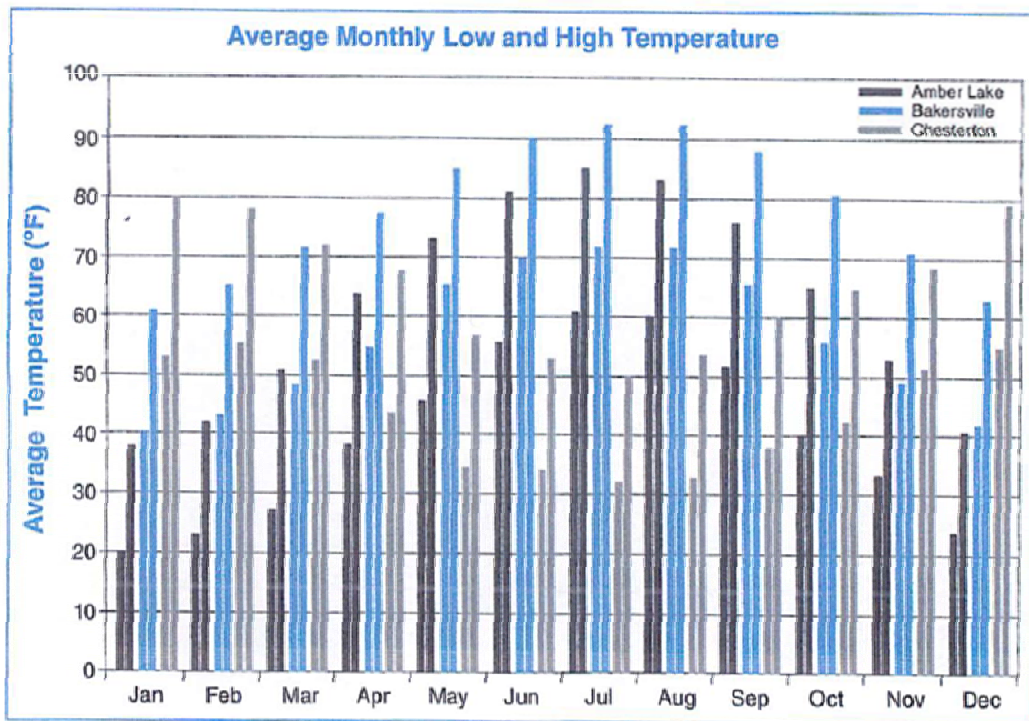


Fig. 0.3. The "correct" way to represent the data as prompted in task A

Representative Student work for Task B

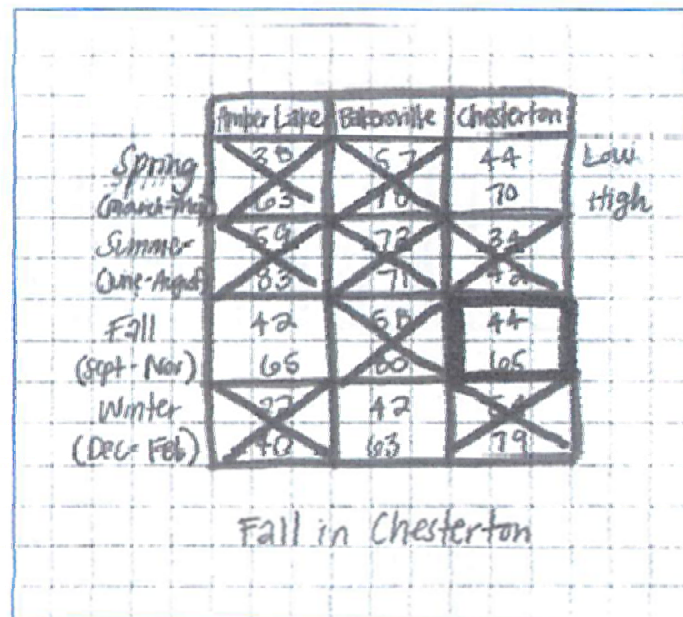


Fig. 0.5. This group of students computed the average high and low temperature in each season for all three cities. They then selected fall in Chesterton as the most desirable time and location for Jeremy.

Representative Student work for Task B

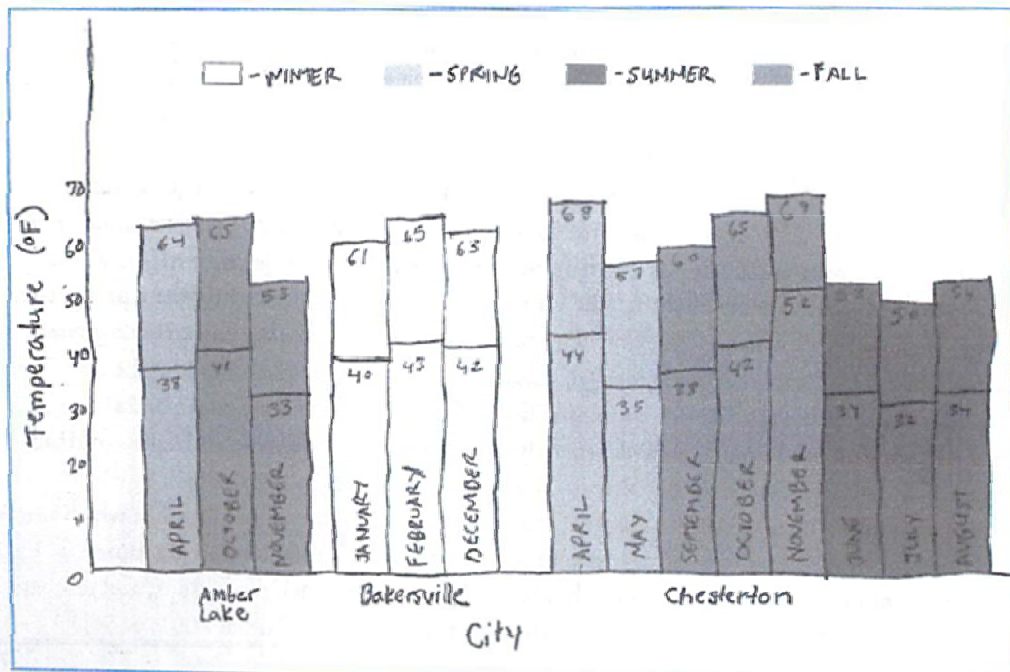


Fig. 0.6. These students identified all the months in each city when the high and low temperatures were within the desirable range. They used a bar graph to plot the data for each of the potential vacation sites and times.

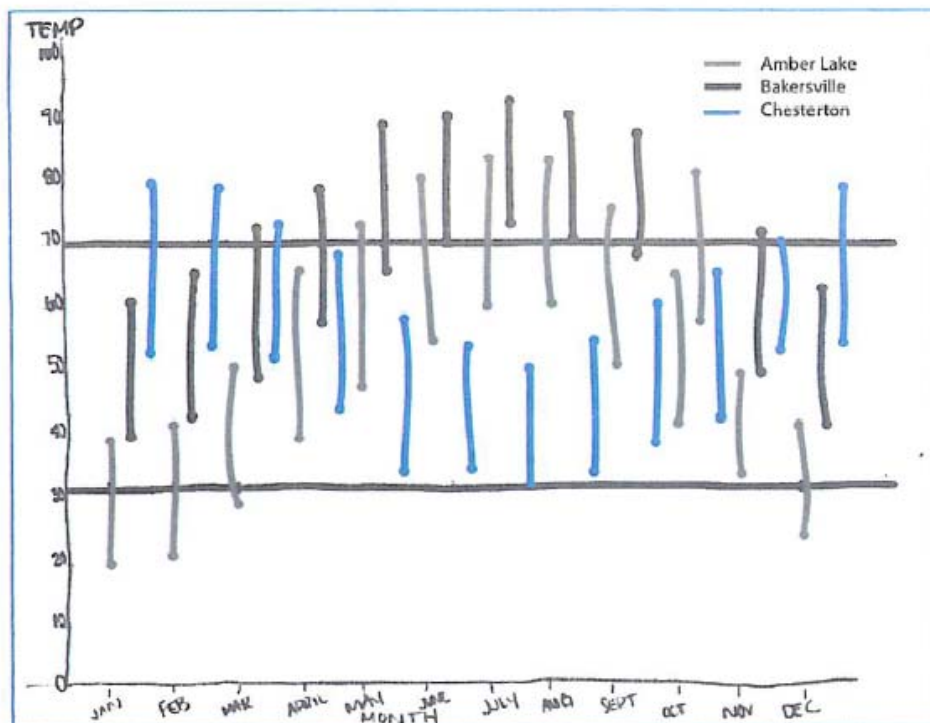


Fig. 0.7. This group chose to plot the temperature range for each city throughout the year. In their oral presentation, they explained that Jeremy could go to any city with a temperature range that falls between the two black horizontal lines (drawn at 32°F and 70°F) during a particular month.